

NOTES & DISCLAIMERS

1. This plan was prepared for POLARIS COOMERA PTY. LTD. for Gold Coast City Council as-constructed record purposes only and must not be used for any other purpose.
2. Fire hydrant, stop valves & kerb conduit marker locations shown hereon are as constructed survey data determined by Michel Group Services Pty. Ltd as determined through field survey to 15/01/2015.
3. Underground services have not been located by field survey and the lines depicting the water supply schema shown hereon do not necessarily represent physical locations except at specific points indicated by actual dimensions.
4. The property boundaries, easements and lot numbers shown hereon have not been surveyed or registered and may be subject to errors and omissions and must not be used for any purpose. All property information should be determined from the registered subdivision plans.
5. This note is an integral part of this plan.

This plan was prepared in accordance with the Council of the City of Gold Coast Standard Electronic Format for As Constructed Data-September 2008.

PN: 262844/03/DA3
OPW: 2014 00547

PARISH: COOMERA		COUNTY: WARD	
SCALE	DATE	DRAWN	
1:250 @A1	15/1/2015	GL	
LEVEL DATUM	LEVEL ORIGIN	ORIGIN RL	
AHD	PM170048	15.593	
AZIMUTH	CO-ORD SYSTEM	CO-ORD SYSTEM	
MGA	LOCAL	PM170048	
EASTING	NORTHING	SURVEYOR	
5330660.490	6920340.665	RC	
AUTOCAD FILE	GEOCOMP FILE	JOB No.	
5083-223A	202785	508 No.2	
CHECKED	DATE	DATE IMAGED	
RC	QT		

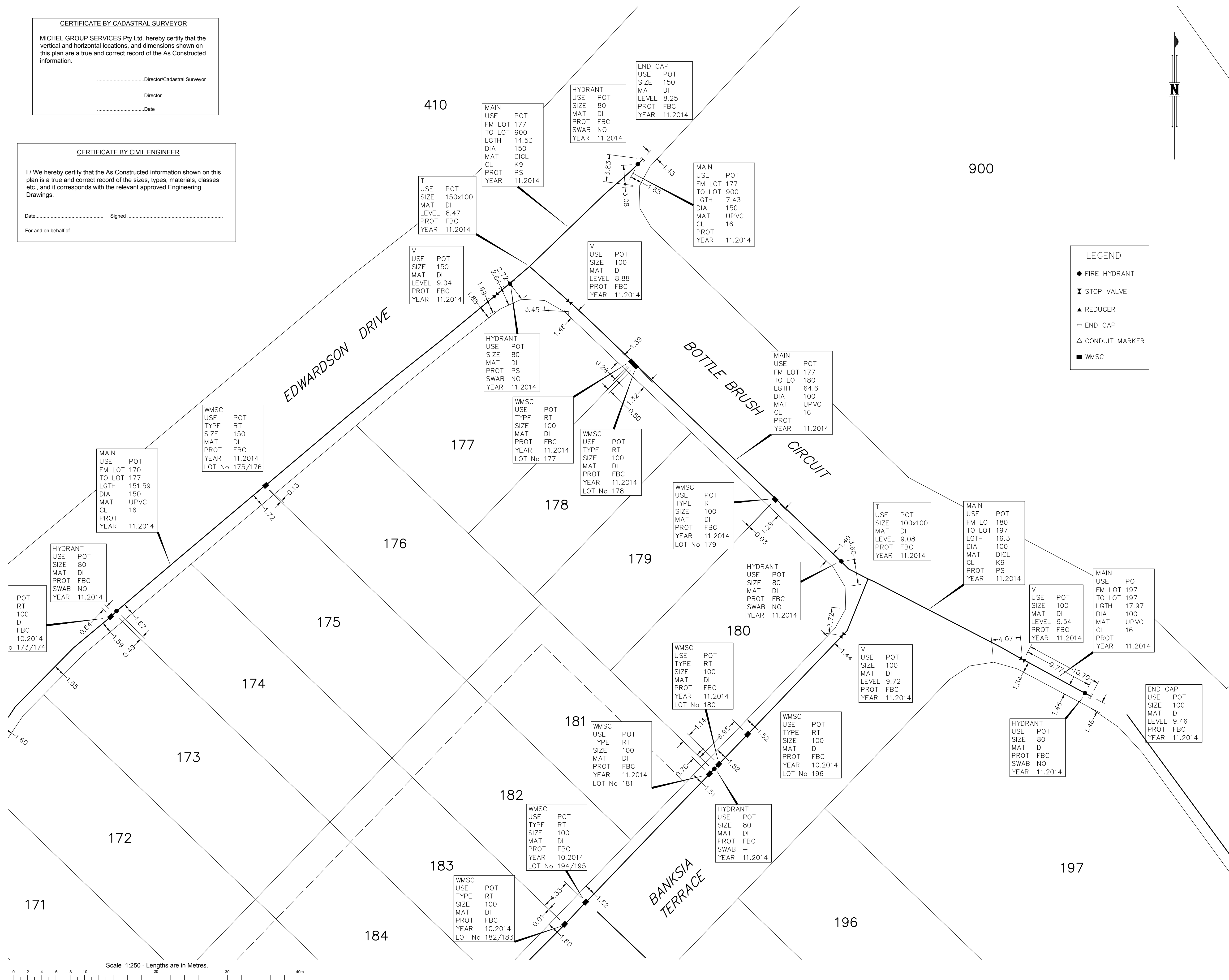
MICHEL GROUP SERVICES Pty.Ltd. hereby certify that the vertical and horizontal locations, and dimensions shown on this plan are a true and correct record of the As Constructed information.

CERTIFICATE BY CIVIL ENGINEER

I / We hereby certify that the As Constructed information shown on this plan is a true and correct record of the sizes, types, materials, classes etc., and it corresponds with the relevant approved Engineering Drawings.

Date..... Signed

For and on behalf of



A	MINOR AMENDMENTS	GL	8/7/2015
ISSUE	SUBJECT	BY	DATE

NOTES & DISCLAIMERS

1. This plan was prepared for POLARIS COOMERA PTY. LTD. for Gold Coast City Council as-constructed record purposes only and must not be used for any other purpose.
2. Fire hydrant, stop valves & kerb conduit marker locations shown hereon are as constructed survey data determined by Michel Group Services Pty. Ltd as determined through field survey to 15/01/2015.
3. Underground services have not been located by field survey and the lines depicting the water supply schema shown hereon do not necessarily represent physical locations except at specific points indicated by actual dimensions.
4. The property boundaries, easements and lot numbers shown hereon have not been surveyed or registered and may be subject to errors and omissions and must not be used for any purpose. All property information should be determined from the registered subdivision plans.
5. This note is an integral part of this plan.

ADDITIONAL INFORMATION

This plan was prepared in accordance with the Council of the City of Gold Coast Standard Electronic Format for As Constructed Data-September 2008.

PN: 262844/03/DA3
OPW: 2014 00547



PROJECT
**FERNDALE ORLANDO DRIVE
COOMERA - STAGES 2A & 2B**

CLIENT
POLARIS COOMERA PTY LTD

DRAWING
TITLE

**AS-CONSTRUCTED PLAN
POTABLE WATER NETWORK**

PARISH: COOMERA		COUNTY: WARD	
SCALE	DATE	DRAWN	
1:250 @A1	15/12/2015	GL	
LEVEL DATUM	LEVEL ORIGIN	ORIGIN RL	
AHD	PM170048	15.593	
AZIMUTH	CO-ORD SYSTEM	CO-ORD ORIGIN	
MGA	LOCAL	PM170048	
EASTING	NORTHING	SURVEYOR	
533060.490	6920340.665	RC	
AUTOCAD FILE	GEOCOMP FILE	JOB NO.	
6983-22A	202785	5053-20	
CHECKED	QC	DATE IMAGED	
RC	OT		

SHEET NUMBER 3 OF 3

PLAN No. 5083-223	ISSUE A
-----------------------------	-------------------